

Paris qui dort

Film by René Clair

Music by Yan Maresz



Crédit photo : ©Centre Pompidou/Mnam

TECHNICAL INFORMATION

INSTRUMENTATION

Nomenclature :

Flute (also piccolo and G flute)

Clarinet B flat (also B flat double bass clarinet)

Accordion

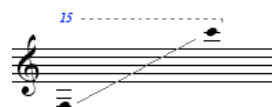
Bass trombone

Cello

Master midi keyboard 88 keys (to be provided by the organiser)

Percussions (to be provided by the organiser) :

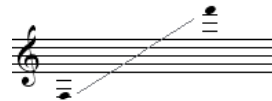
Glockenspiel



crotales



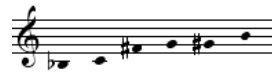
vibraphone



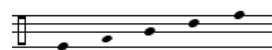
cowbells



Rins (japanese or chinese bowls)



5 temple-blocks



1 small thunder
4 trap tables

• **Stage:**

The size of the stage has to be 8 – 6 meters minimum for the musicians. The musicians should not disturb the visibility of the screen for the audience.

- 8 * small microphones stands + cables
- Microphones : 1 * DPA 4088 headset / 1 * SD systeme clarinette basse (+ 1 systeme clarinette) / 2 * DPA 4060 / 1 * AKG CK97 (clip on) / 1 * DPA 4021 with cello clip / 1 * Shure SM98 / 2 * AKG C421 / 5 * Shure SM57
- 16 audiolines (XLR3) from stage to mixer
- 1 * master midi keyboard 88 keys with program changes (type Yamaha KX88) + footswitch pedal
- 2 * Pads + trigger (type DDrum) percussion
- 1 * ear monitor for the conductor (clicktrack only)

- 1 * video monitor for the conductor
- 10 music stands with graduated light
- 1 conductor music stand with graduated light
- 1 rostrum for the conductor (1m x 1m, height = 20cm)
- 2 piano chairs
- 2 doublebass chairs

A DVD of the film with incrustated time code is played during the performance and sent to the conductor's video monitor. The speed of the 35mm projector is adjusted (real time) to be synchronized with the DVD.

• **Film: (Beta SP tape)**

The movie is played by the Beta player (digital or SP) and is projected by the video projector for all the audience. Then, from the same Beta player, the "video out with Time-Code incrustated" is sent to a small monitor on stage for the conductor..

Grand rights and renting of the tape : Pathé

Contact : Catherine Montouchet, Gaumont Pathé Archives, +33 (0)1 40 76 91 69

- Beta SP player
- Video projector

• **Sound equipment in the hall**

We need 3 x 1 meters for the mixer and audio equipment. The regie has to be in a centered position in the hall.

- 1 * DM1000 or Dm2000 Yamaha version 2 with a MY16-AT
- 2 * stereo reverb (type TC electronics M2000)
- 10 audio lines from mixer to amplifiers
- DVD player + video monitor for the projector technician
- 1 video line from DVD player to conductor

• **PA – Diffusion *:**

** the exact number of loudspeakers will have to be finalized according to the size and shape of the hall (balcony, etc.)*

- 6 Loudspeakers (Type D&B F1220 or C6 or Amadeus MPB 600 or MTD 115 L-Acoustic) with amplifiers, processors and cables
- 2 subwoofers (type D&B B2 or MTD118 L-Acoustic or Amadeus Atelier33 MPB1200) with amplifiers, processors and cables
- 2 wedge monitors with amplifiers and speakers cables (type MTD112 L-Acoustic or Amadeus Atelier33 MPB200R) with amplifiers, processors and cables (for keyboard player and conductor

Note : the amplifiers have to be silent or placed outside the hall if noisy

Provided by Ircam

- 2 * Titanium G4 computers +RME multiface soundcard
- 2 * midi interface type unitor 8 (3 inputs)
- 1 * midi mixer 8 faders (type Berhinger BCF2000)
- Beta SP tape